

OREGON STATE BICYCLE MAP

Check Local Road Conditions
Some roads in Oregon may close for the winter season or may close due to inclement weather. Road Summits and Elevation in Feet. Interstate Route Marker. U.S. Route Marker. State Route Marker. Amtrak Route.

Interstate Exit Number
Full and Partial Traffic Interchange. Accumulated Mileage Between Starts. Mileage Between Towns and Junctions.

COMMUNITIES
State Capital. County Seat. Incorporated Place. Unincorporated Place. Local or Site.

POPULATION
Portland: More Than 100,000
Medford: 25,000 to 100,000
Madras: Less than 2,500
Wagoner: None
Unincorporated Place

Other Symbols:
Point of Interest. State Park, Army Corps of Engineers. Dry Lake Only. State Park with Overnight Facility. State Park with Reserved Campsites. Safety Recreation Area. U.S. Forest Service Campground. Bureau of Land Management Campground. Covered Bridge. Commercial / Other Airport. Lighthouse. Fish Hatchery / Wildlife Viewing Area. Winter Recreation Area. Historic / National Trail. Oregon Scenic Waterway.

1

2

3

4

5

6

7

8

9

Pacific Ocean

All rocks, reefs, and stands off the Oregon Coast are protected as part of the Oregon Islands National Wildlife Refuge

Copyright © 2008
Prepared by
Oregon Department of Transportation
in cooperation with
Laboratory, Department of Geograph
University of Oregon

1

2

3

A

B

C

D



46°

45° 30'

45°

122°

123°

124°

125°

126°

127°

128°

129°

130°

131°

132°

133°

134°

135°

136°

137°

138°

139°

140°

141°

142°

143°

144°

145°

146°

147°

148°

149°

150°

151°

152°

153°

154°

155°

156°

157°

158°

159°

160°

161°

162°

163°

164°

165°

166°

167°

168°

169°

170°

171°

172°

173°

174°

175°

176°

177°

178°

179°

180°

181°

182°

183°

184°

185°

186°

187°

188°

189°

190°

191°

192°

193°

194°

195°

196°

197°

198°

199°

200°

201°

202°

203°

204°

205°

206°

207°

208°

209°

210°

211°

212°

213°

214°

215°

216°

217°

218°

219°

220°

221°

222°

223°

224°

225°

226°

227°

228°

229°

230°

231°

232°

233°

234°

235°

236°

237°

238°

239°

240°

241°

242°

243°

244°

245°

246°

247°

248°

249°

250°

251°

252°

253°

254°

255°

256°

257°

258°

259°

260°

261°

262°

263°

264°

265°

266°

267°

268°

269°

270°

271°

272°

273°

274°

275°

276°

277°

278°

279°

280°

281°

282°

283°

284°

285°

286°

287°

288°

289°

290°

291°

292°

293°

294°

295°

296°

297°

298°

299°

300°



Interstate Freeway

Highway Shoulder Width 4' or More

Highway Shoulder Width Less Than 4'

Paved/Gravel Road Without Shoulder Data

Road Summit and Elevation in Feet

Interstate Route Marker

U.S. Route Marker

State Route Marker

Amtrak Route

Interstate Exit Number

Full and Partial Traffic Interchange

Accumulated Mileage Between Stars

Mileage Between Towns and Junctions

Check Local Road Conditions

Some roads in Oregon may close for the winter season or may close due to inclement weather. Please inquire locally.

OREGON

STATE BICYCLE MAP

COMMUNITIES	POPULATION
State Capital	Portland More Than 100,000
County Seat	Medford 10,000 to 100,000
Incorporated Place	Madras 2,500 to 10,000
Unincorporated Place	Waldport Less than 2,500
Locale or Site	Noti Unincorporated Place

Oregon Department of Transportation
 Transportation Development Division
 Salem, OR 97301

Point of Interest

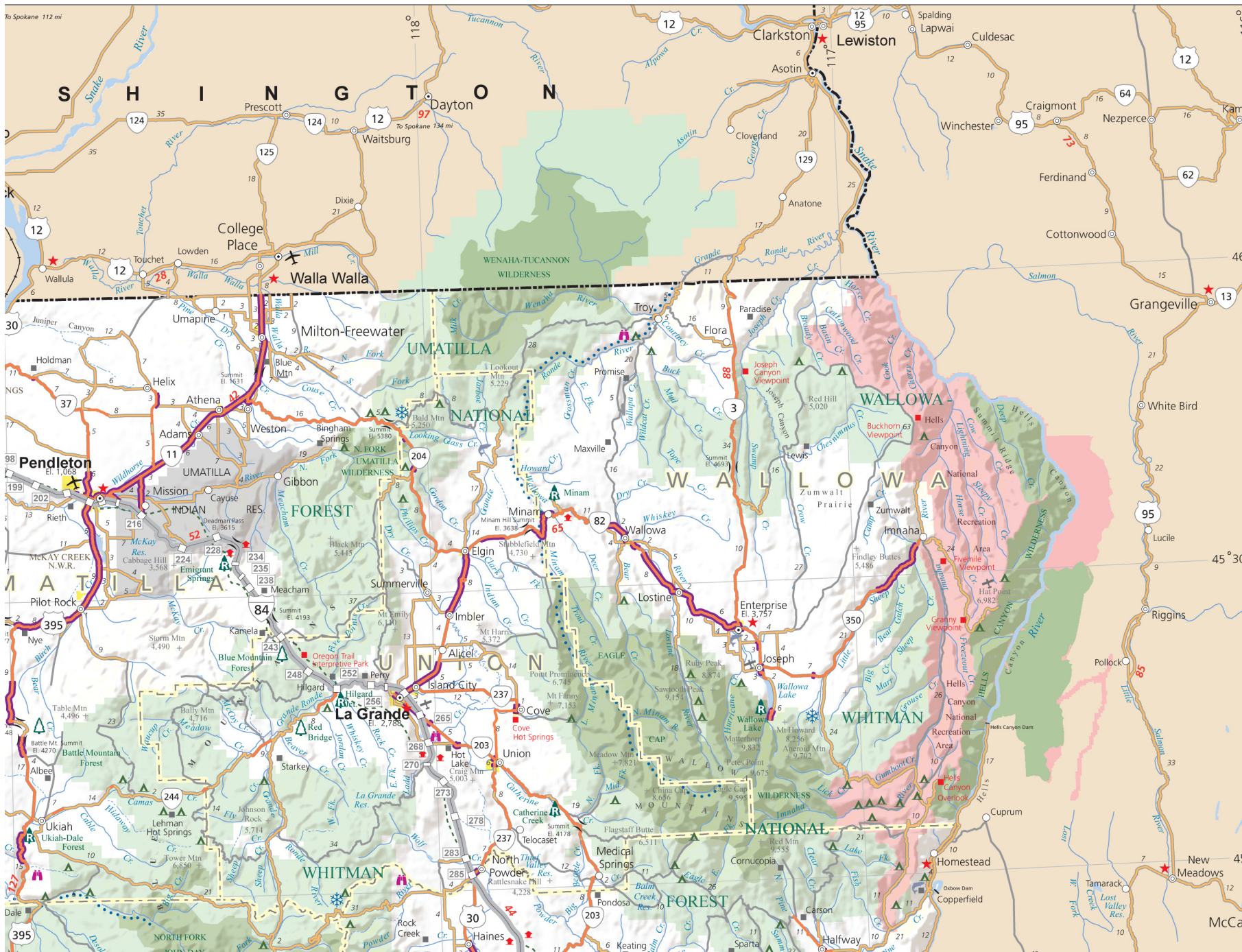
- State Park, Army Corps of Engineers Day Use Only
- State Park with Overnight Facility
- State Park with Reserved Campsites
- Safety Rest Area
- U.S. Forest Service Campground
- Bureau of Land Management Campground
- Covered Bridge
- Commercial / Other Airport
- Lighthouse
- Fish Hatchery / Wildlife Viewing Area
- Winter Recreation Area
- Historic / National Trail
- Oregon Scenic Waterways

A

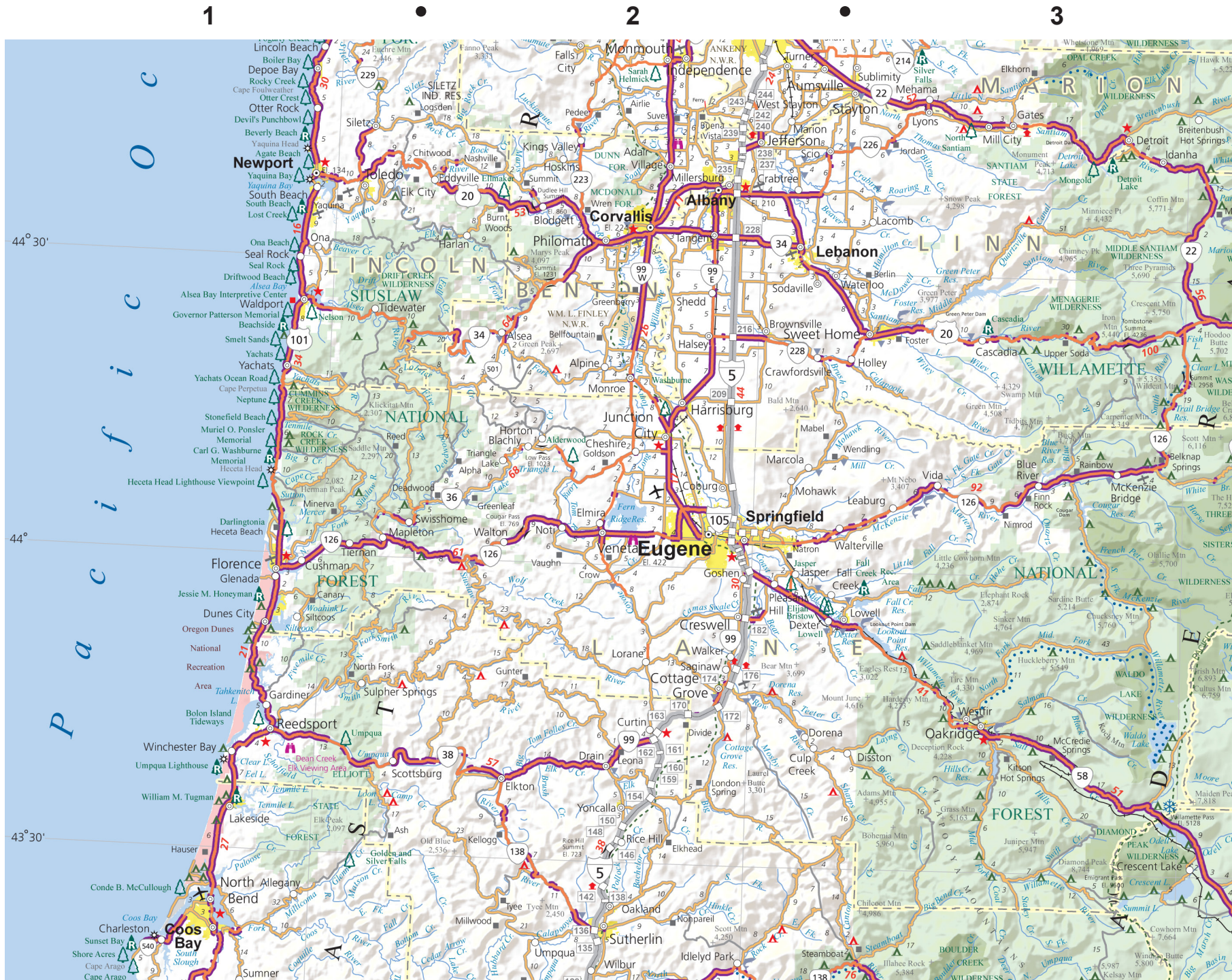
B

C

D



This version is formatted for printing on 8 1/2"-by-11-inch paper. For large-format, preprinted folded copies, contact the ODOT Pedestrian-Bicycle Program (503) 986-3556.



1

2

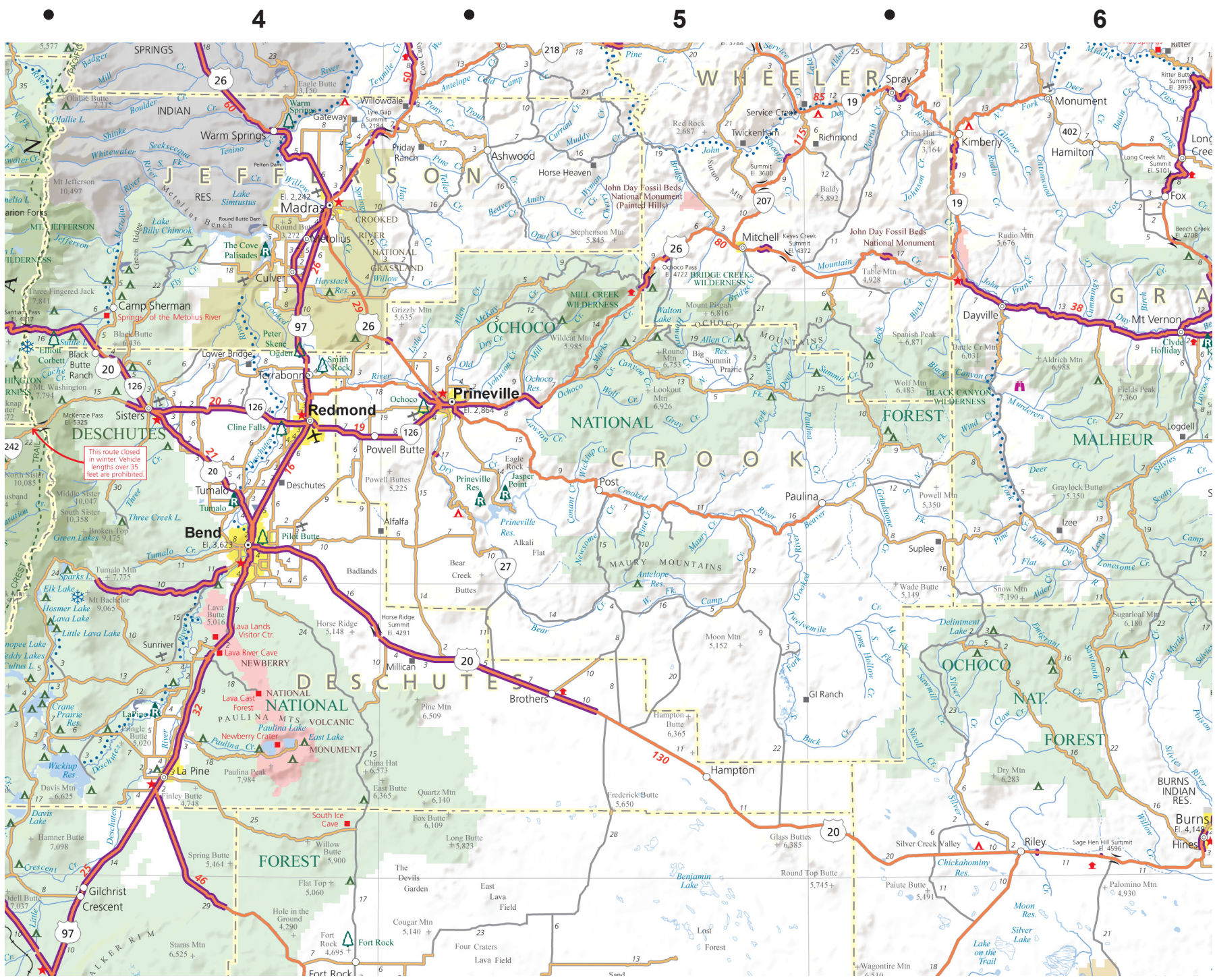
3

E

F

G

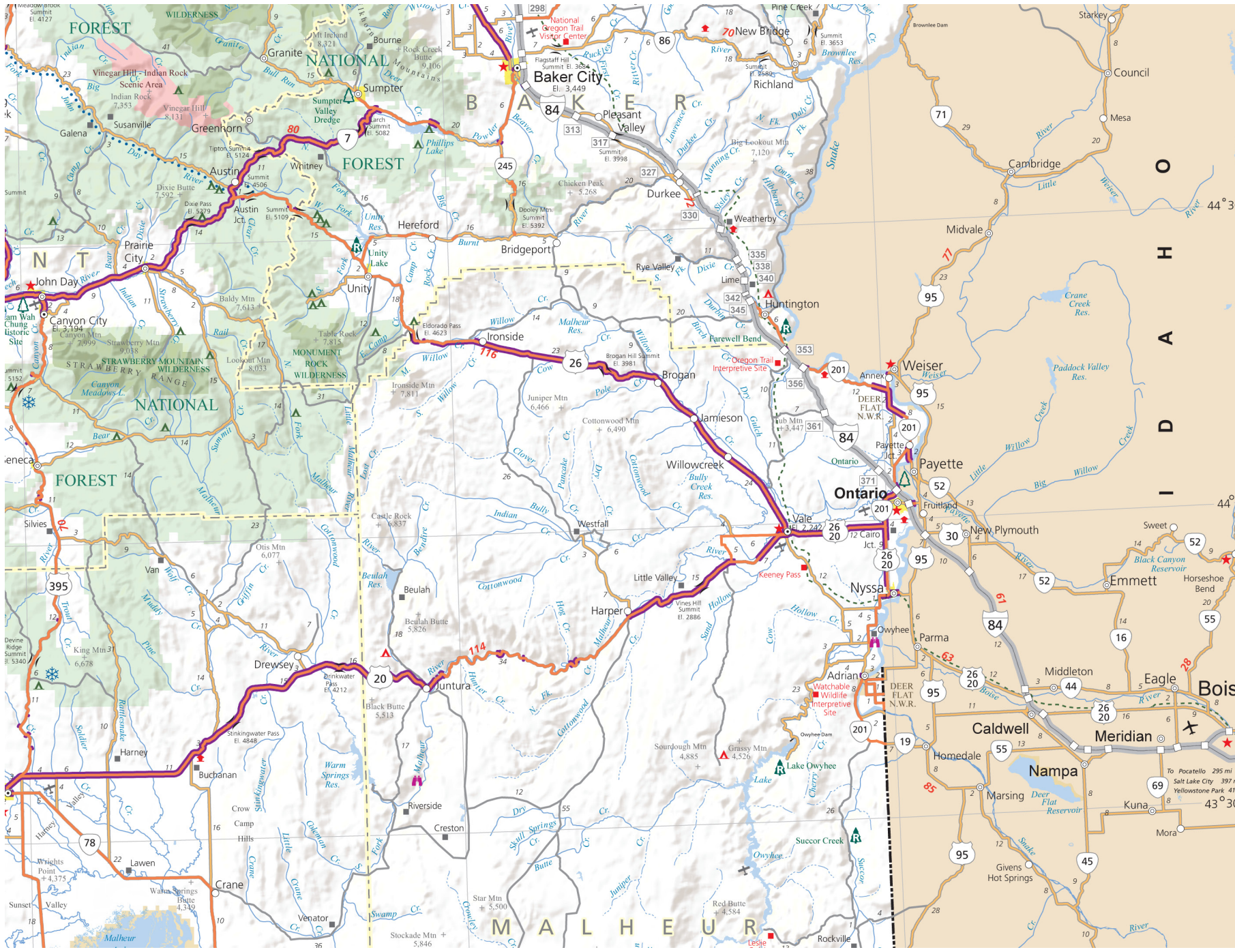
E
F
G



4

5

6

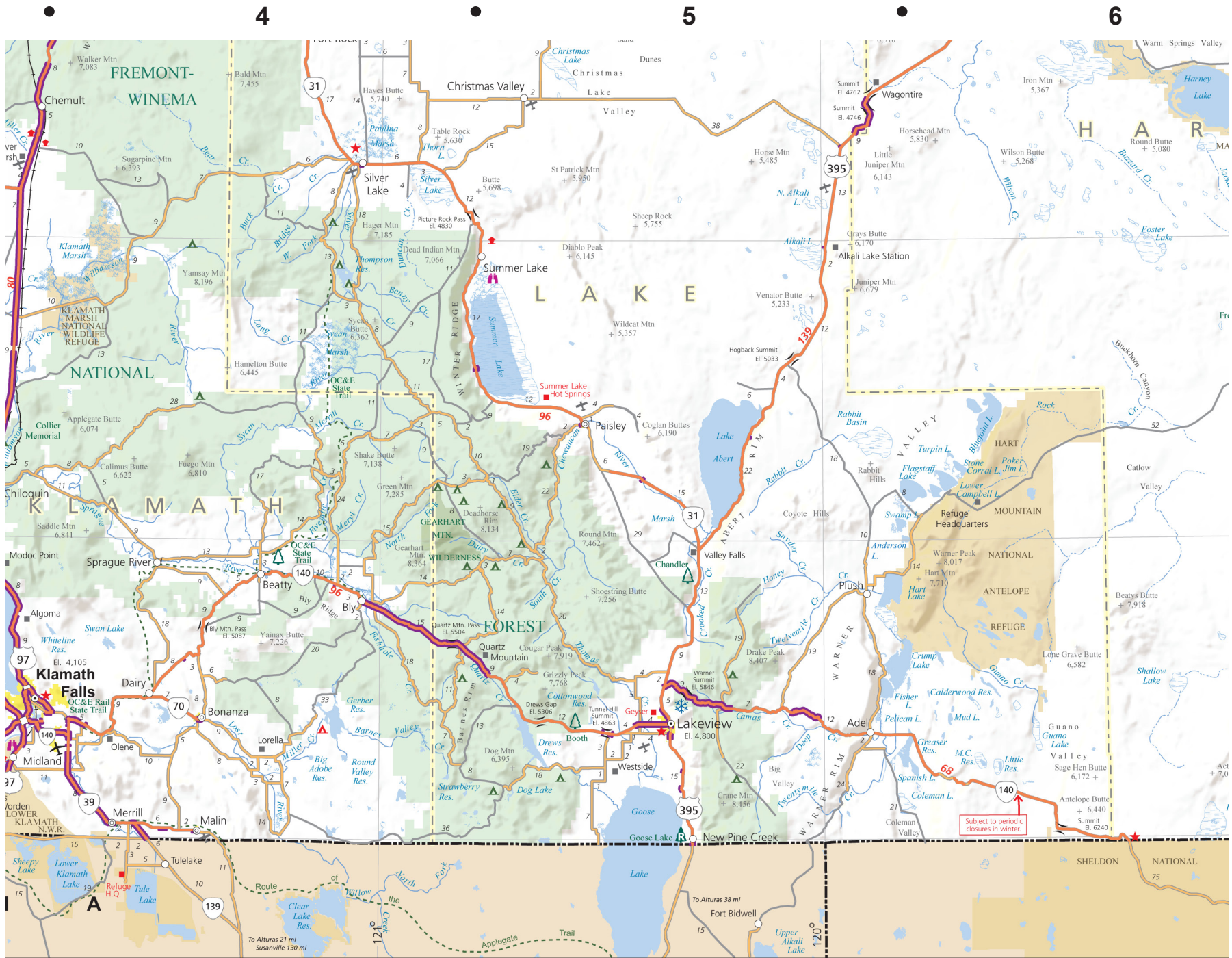


E

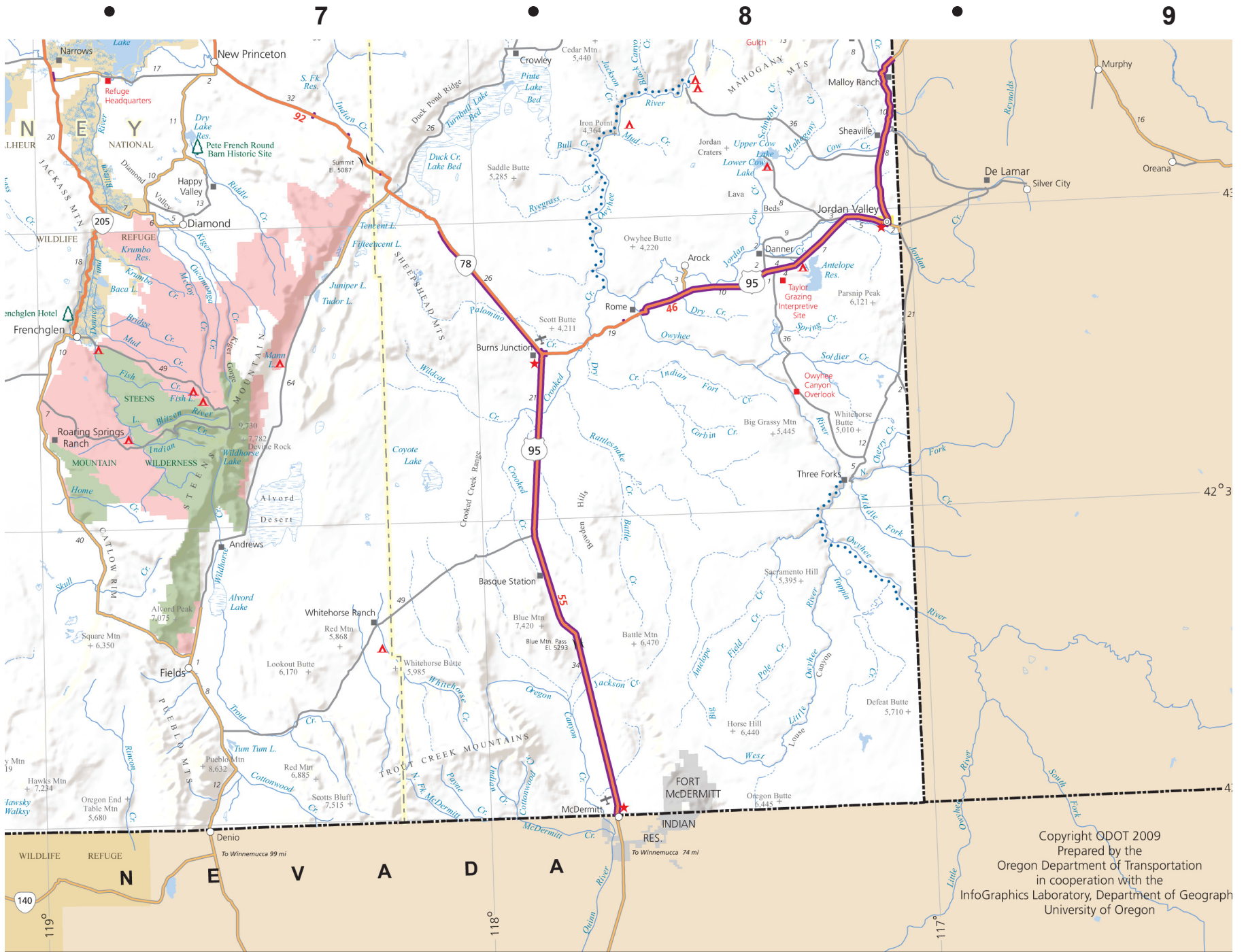
F

G





Subject to periodic closures in winter.



Copyright ODOT 2009
 Prepared by the
 Oregon Department of Transportation
 in cooperation with the
 InfoGraphics Laboratory, Department of Geograph
 University of Oregon